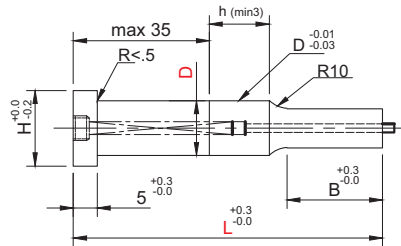
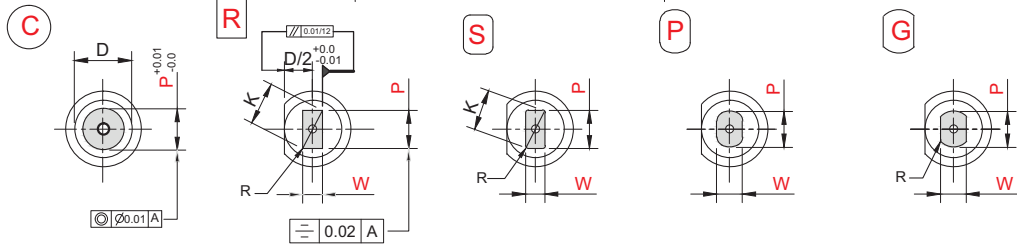


► Ejector Punch (PJCL)



Material :- HCHCr (D)
High Speed Steel (H)
Powder Metallurgy (PM)
Hardness :- 60-62HRC



Type	Tip Shape	Tip Length	D	L	0.01 mm increments				B	H	
					C		R S P G				R
					min. P	max.	P. K max.	P. W min			R
PJCL	C R S P G	S	4	40 50 60 70 80	1.00	-3.99	3.97	1	8	7	
			5	40 50 60 70 80	2.00	-4.99	4.97	2		8	
			6	40 50 60 70 80	2.00	-5.99	5.97	2		9	
			8	40 50 60 70 80 90 100	3.00	-7.99	7.97	3	13	11	
			10	40 50 60 70 80 90 100	3.00	-9.99	9.97	3		13	
			13	40 50 60 70 80 90 100	6.00	-12.99	12.97	6		16	
			16	40 50 60 70 80 90 100	10.00	-15.99	15.97	6	19	19	
		20	40 50 60 70 80 90 100	13.00	-19.99	19.97	6	23			
		25	40 50 60 70 80 90 100	18.00	-24.99	24.97	6	28			
		L	4	50 60 70 80	1.00	-3.99	3.97	2	13	7	
			5	50 60 70 80	2.00	-4.99	4.97	2		8	
			6	50 60 70 80	2.00	-5.99	5.97	2		9	
			8	50 60 70 80 90 100	3.00	-7.99	7.97	3	19	11	
			10	50 60 70 80 90 100	3.00	-9.99	9.97	3		13	
	13		50 60 70 80 90 100	6.00	-12.99	12.97	6	16			
	16		60 70 80 90 100	10.00	-15.99	15.97	6	25	19		
	20	60 70 80 90 100	13.00	-19.99	19.97	6	23				
	25	60 70 80 90 100	18.00	-24.99	24.97	6	28				
	X	5	60 70 80	2.00	-4.99	4.97	3.5	25	8		
		6	60 70 80	2.00	-5.99	5.97	3.5		9		
		8	70 80 90 100	3.00	-7.99	7.97	5	30	11		
		10	70 80 90 100	3.00	-9.99	9.97	6		13		
		13	70 80 90 100	6.00	-12.99	12.97	6		16		
		16	80 90 100	10.00	-15.99	-		40	19		
		20	80 90 100	13.00	-19.99				23		
		25	80 90 100	18.00	-24.99				28		

Order Type :- Code (Material) X Tip Shape X Tip Length X D X L X P.W
Example :- PJCL (D) X C X S X 20 X 100 X 6